

Invasive non-native species and the role of recording schemes

- Lucy Cornwell
- GB Non-native Species Secretariat



Department
for Environment
Food & Rural Affairs



The Scottish
Government



Llywodraeth Cymru
Welsh Government



Animal &
Plant Health
Agency

Invasive non-native species (INNS)

Non-native (alien)

- A plant or animal that has been introduced to GB by people



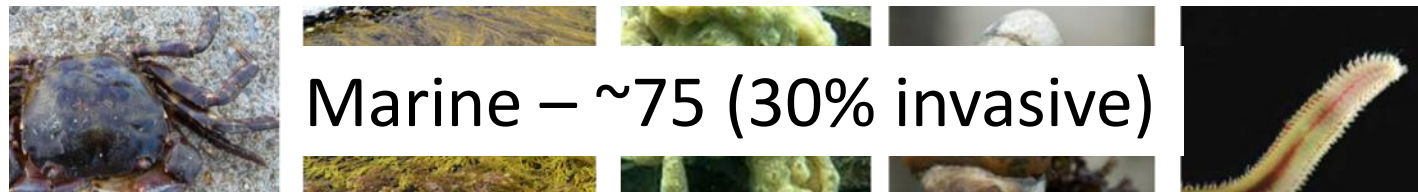
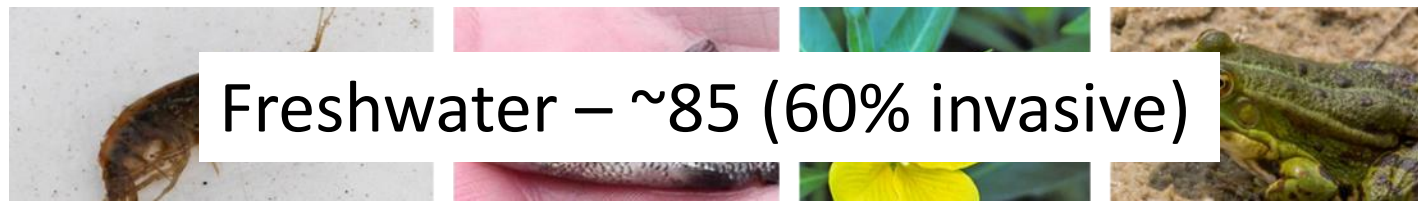
Invasive

- Negative impact



Many species across taxa and environment

- c. 2000 non-native species established in GB
- 10-15% are invasive

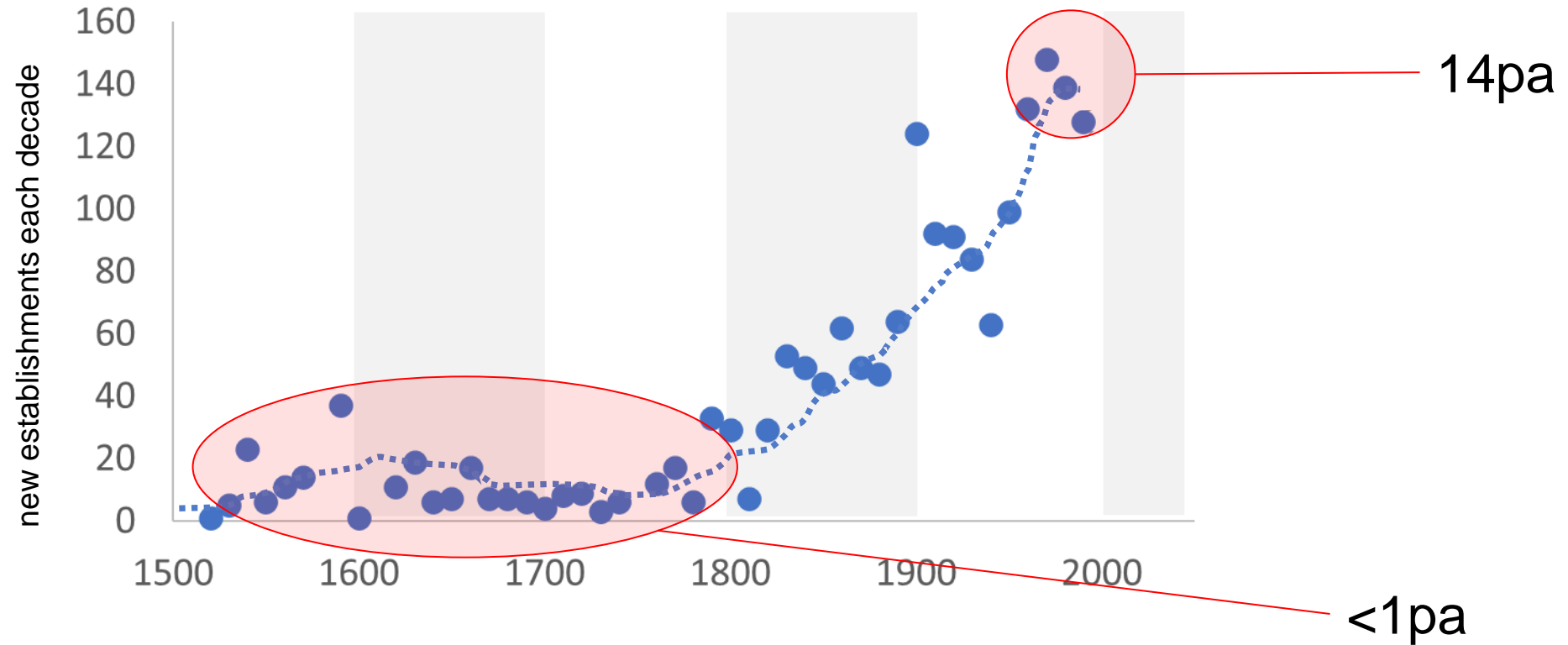


How do they get here?

- 36 major introduction pathways



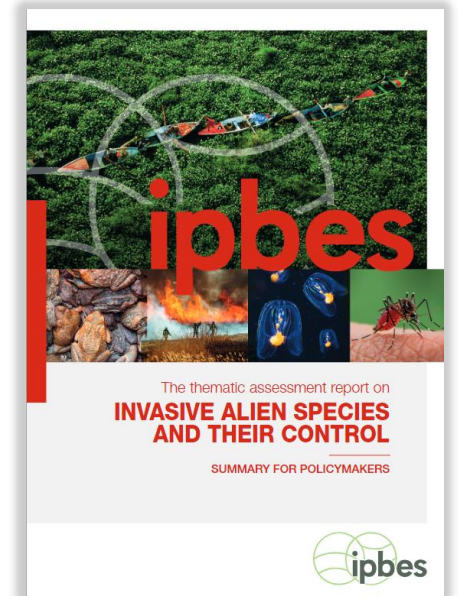
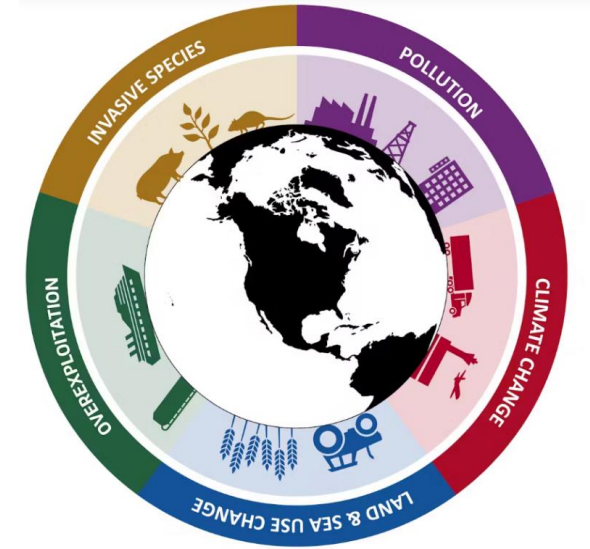
Increasing rapidly in GB



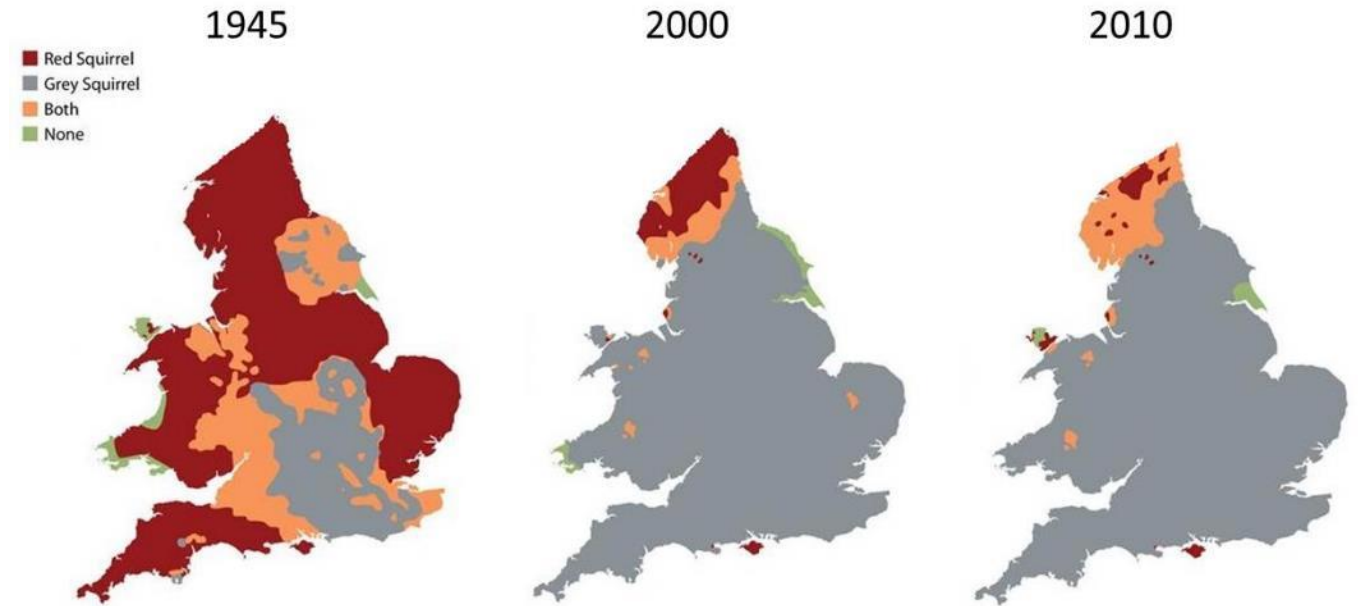
Mean establishments per annum

Impacts

- One of the top drivers of biodiversity loss worldwide
- Key role in 60% of global extinctions
- Global economic cost over \$423 billion a year
 - Quadrupled each decade since 1970
- ~ £2 billion a year in GB



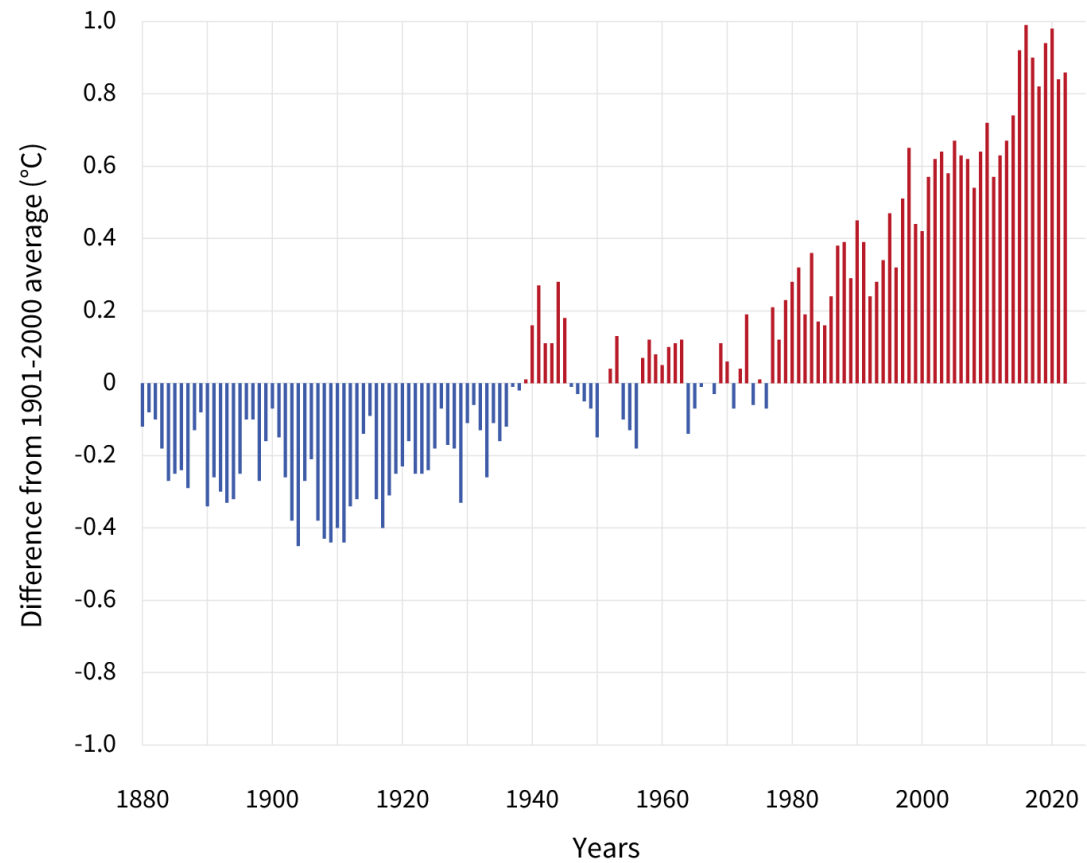
Biodiversity impacts





Exacerbated by climate change

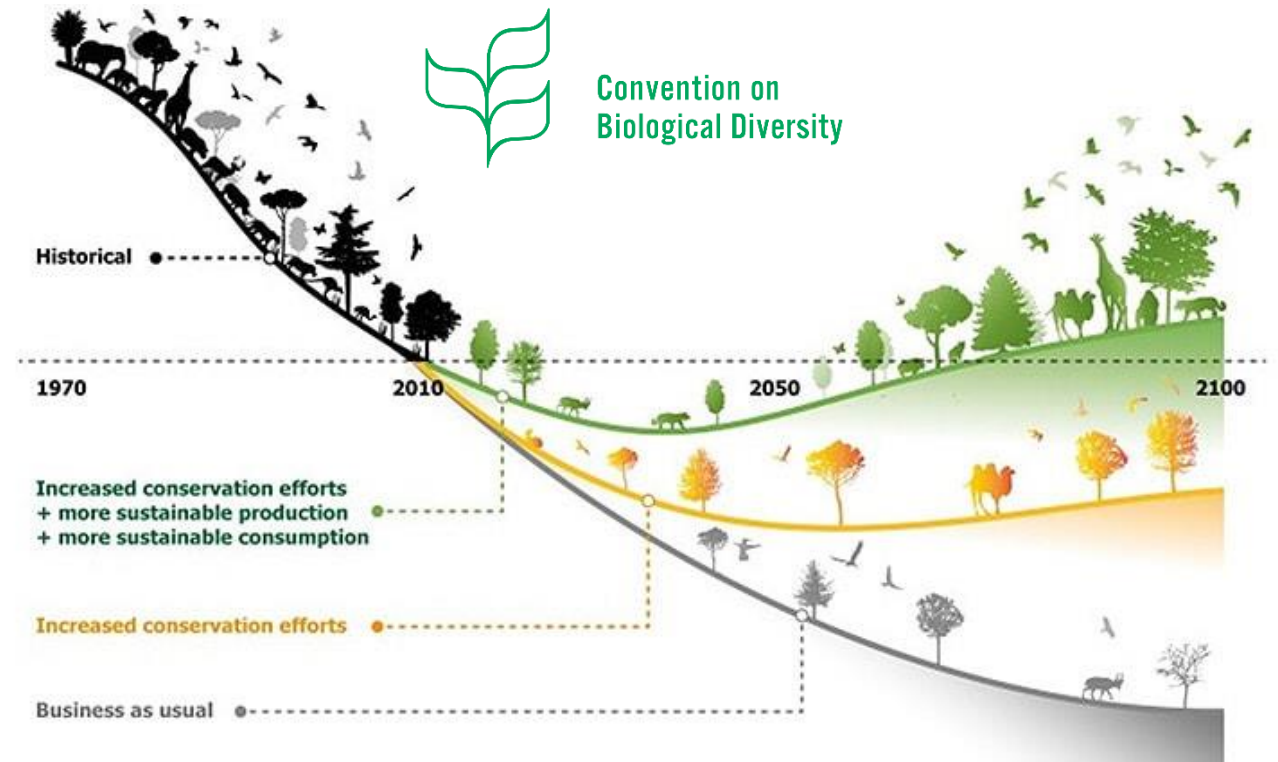
GLOBAL AVERAGE SURFACE TEMPERATURE



CBD Global Biodiversity Framework

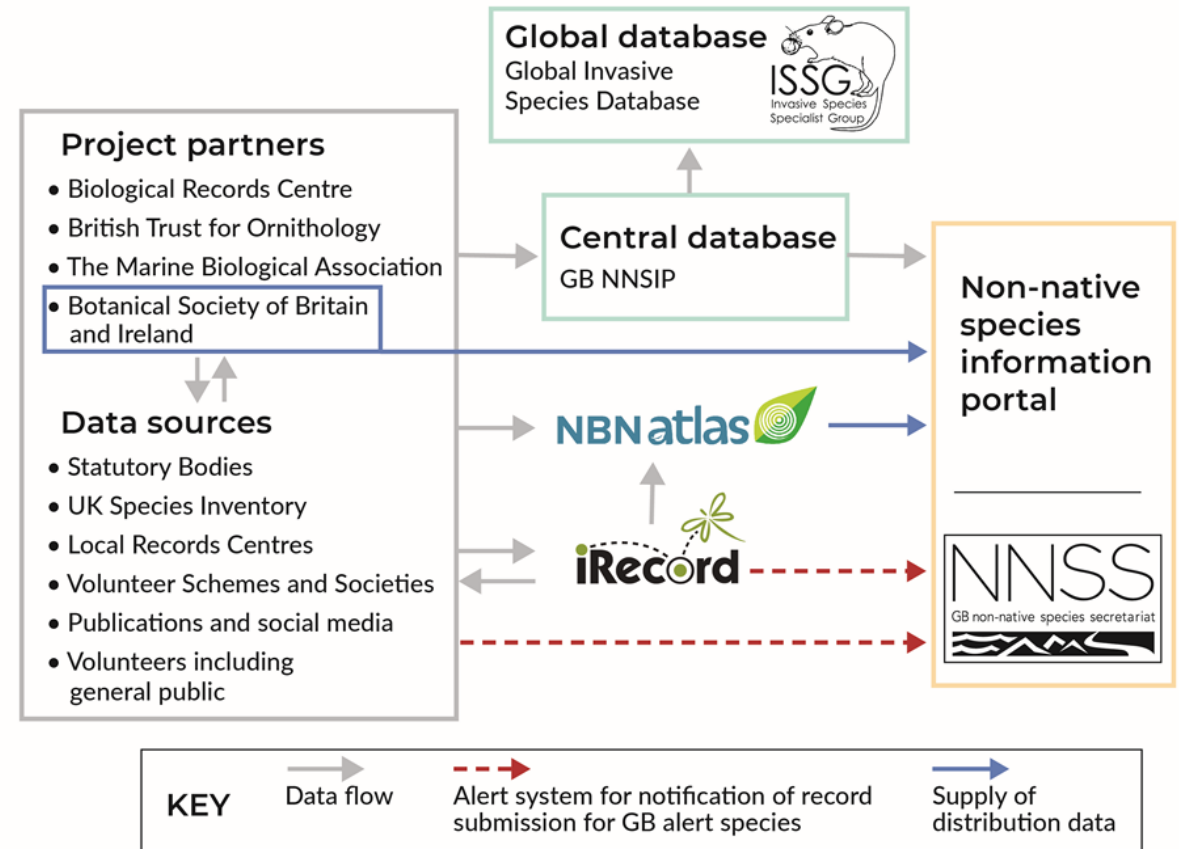
Target 6, COP 15 (2022)

- Prevent:
 - establishment of priority INNS
 - 50% of other INNS
- Eradicate or control INNS, especially in priority sites
- Need to know when new species arrive
 - Rapid response
 - Monitoring progress towards targets



NNSIP (GB Non-native Species Information Portal)

- Main repository for NNS data in GB
- Provides:
 - GB alert system
 - Asian hornet alerts
 - BIC alert system
- Improving how data collected and speed of flow

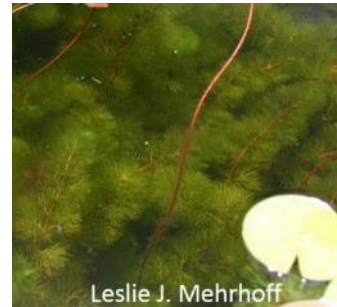


Data flow

- Trying to improve data flow
- Avoid missing opportunity to prevent establishment
- Support from recording schemes crucial



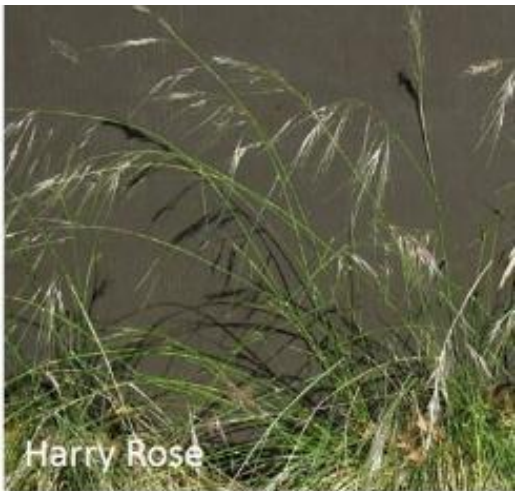
GB Alert species



9 vertebrates



7 plants

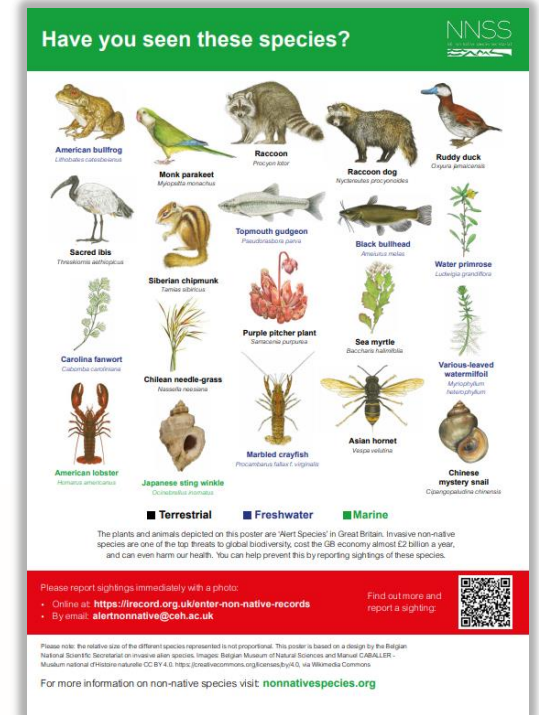
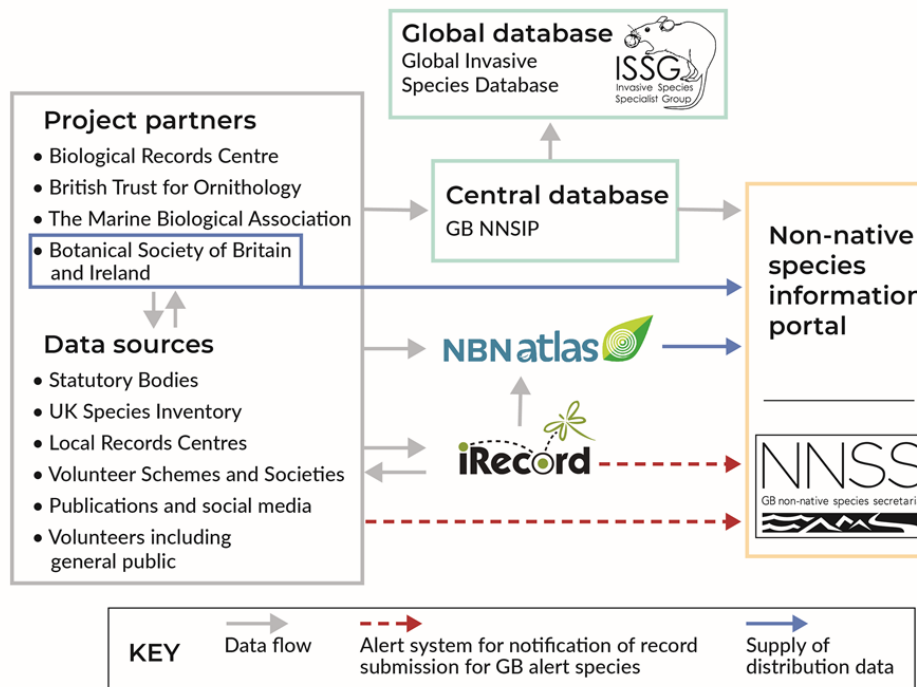


5 invertebrates



Reporting sightings

- Alert species
- Any other non-native species new to GB



1.



Icons include a fishing hook, two fish, a pair of scissors, and a circular sign with the text "CHECK CLEAN DRY".

2.



Icons include a recycling symbol, a leaf, and a shopping cart.

BE PLANT WISE

3.



Icons include a fishbowl with a fish and a castle, and three paw prints.

4.



Icons include a smartphone and a magnifying glass over a bug.

5.



Icons include a group of trees and a group of four people.

INVASIVE SPECIES WEEK

12-18 May 2025

Contact details

www.nonnativespecies.org

nss@apha.gov.uk

- Free online biosecurity training



The screenshot shows the homepage of the Non-Native Species Secretariat (NNS). At the top right, there are links for "Skip to main content", "Contact Us", and "Search". The main navigation bar includes "Home", "About", "Non-native species", "What can I do?", "Legislation", and "Biosecurity and pathways". Below this, there are sub-navigation links for "Local Action Groups (LAGs)", "Resources and projects", "Overseas Territories", and "International".

The main content area features a search bar with the text "Find the information you need" and "Enter a non-native species name or the topic or resources you are looking for:". To the right of the search bar are "Popular searches" including "Asian hornet", "Water Primrose", "ID sheets", and "Invasive Species Week".

Below the search bar, there are three featured articles:

- What are non-native species?**: Learn what non-native and invasive non-native species are.
- Species alerts!**: View a list of current alert species to lookout for and record.
- Record non-native species**: Find information on identifying non-native species and where to record your sightings.

On the right side, there is a "News and Events feed" with several items:

- [NNSIP down for server upgrade](#) (14 November 2023)
- [IPBES webinar recording now available](#) (11 October 2023)
- [Call for manuscripts for special issue of Journal of Zoological and Botanical Gardens](#) (11 April 2023)
- [View all news and events](#)

At the bottom, there are two news items:

- Look out for Asian hornet**
- Major new report on invasive non-native species published**