

# The Role of Museums in Biological Recording

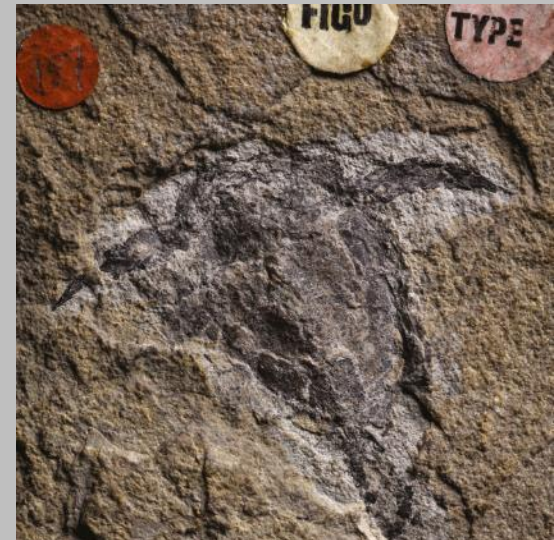


**Ashleigh Whiffin**  
(Assistant Curator of Entomology)





©National Museums Scotland





# The Collection Centre





# The Collection Centre





# From Field to Collection





# National Recording Schemes

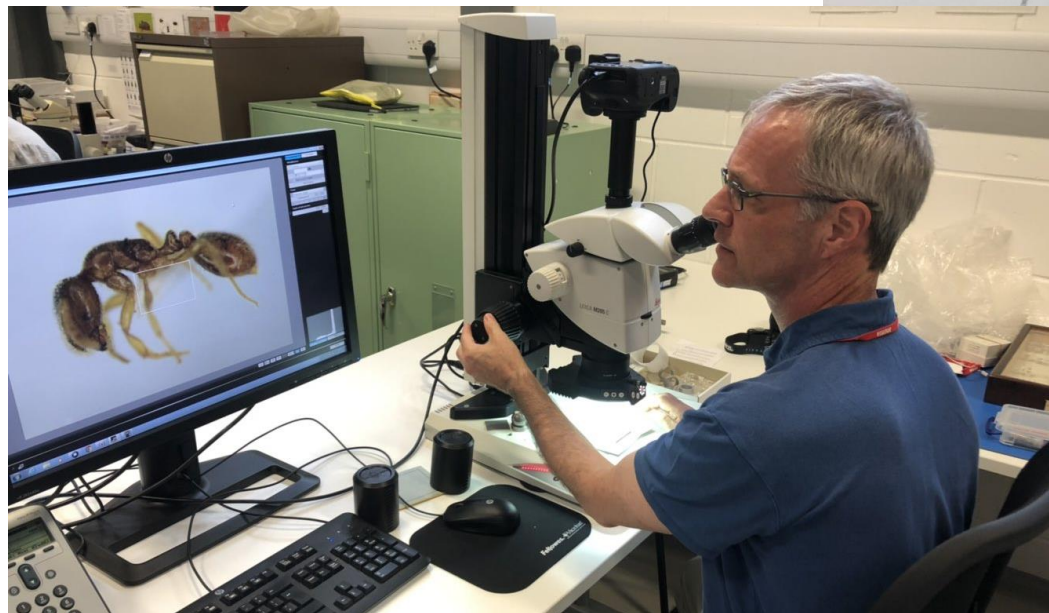
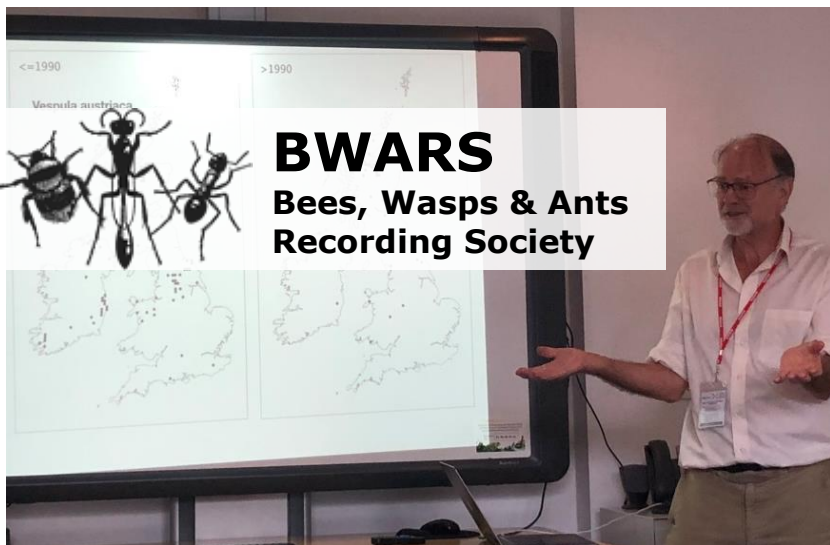


From aiding identifications to  
searching for historical localities





# National Recording Schemes



**Susan Falconer** @SusanFalconer7 · Jul 27

A fab first day of the [@bwars2000](#) summer visit. Thanks to [@AshWhiffin](#) for sorting out a museum session. Loving those funky wasps 🐝





# National Recording Schemes

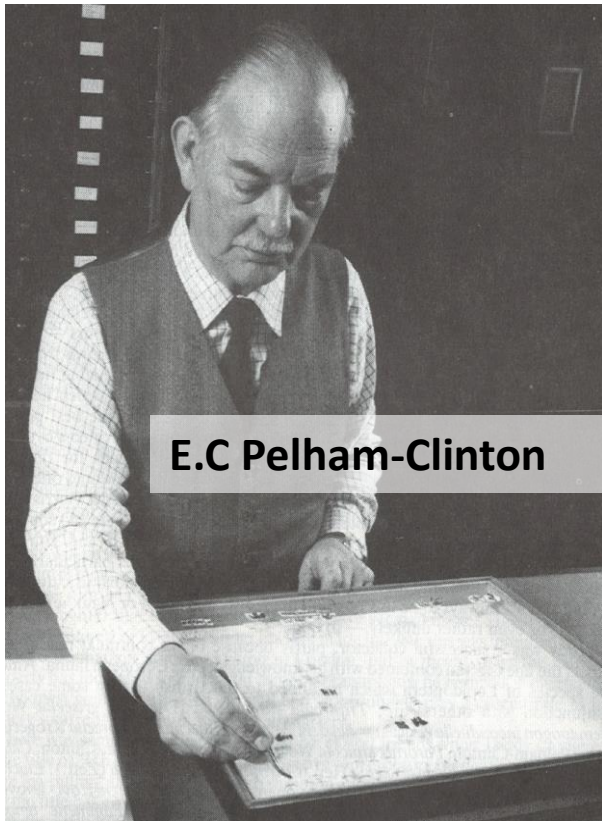
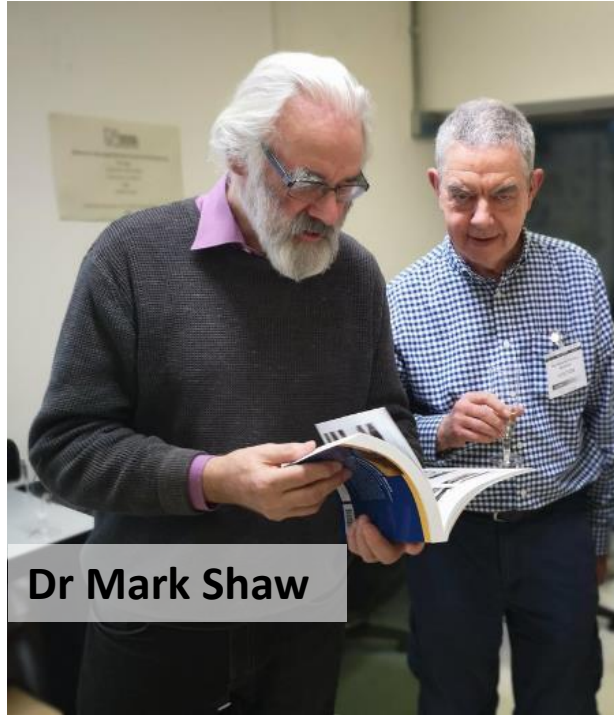


## Dung Beetle UK Mapping Project



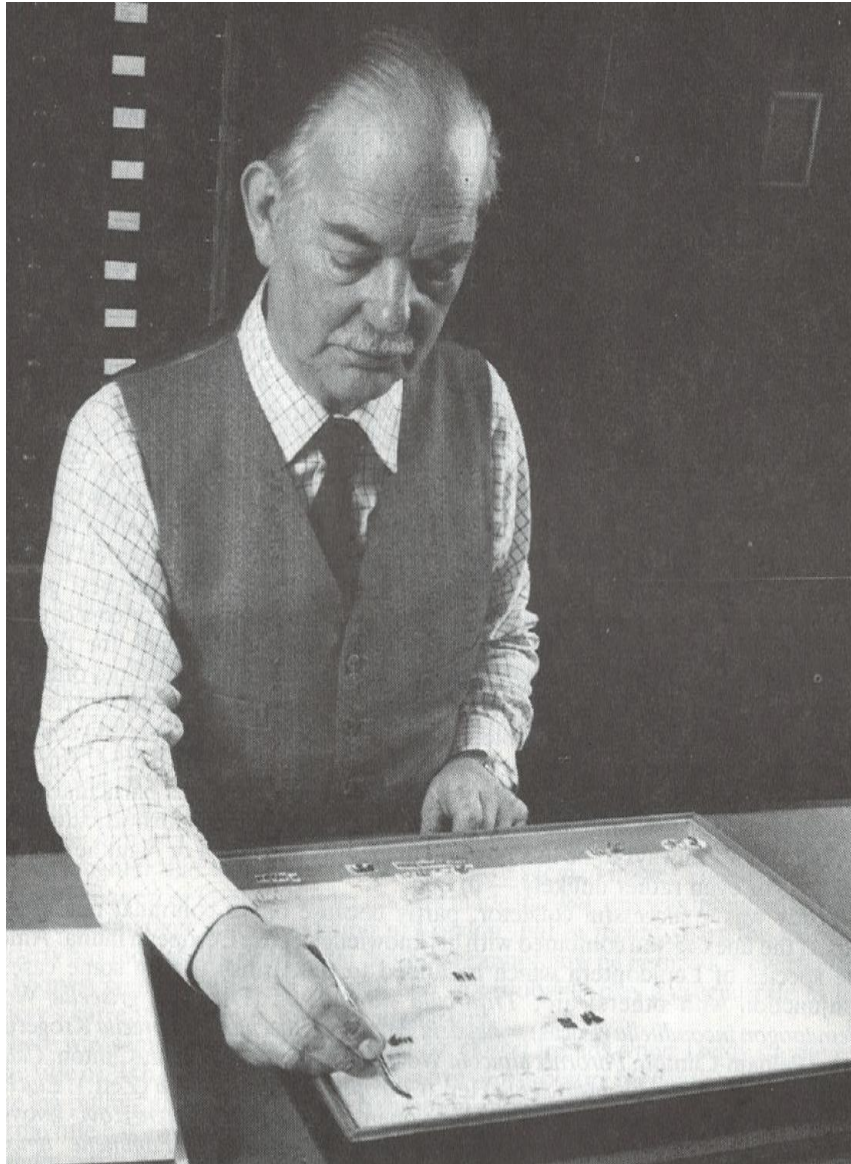


# Curators or Recorders?





# E.C Pelham-Clinton (1960-1981)







Climate change and sea level rise:  
the impact on **Scottish saline lagoons**





# External-Lead Research

Imperial College  
London



national  
museum  
wales  
cymru



National  
Museums  
Scotland

OXFORD UNIVERSITY  
MUSEUM OF  
NATURAL  
HISTORY



UoN University of  
Northampton



**BWARS**

Bees, Wasps & Ants  
Recording Society



Using museum specimens to investigate how a century of land use change has affected wild bumblebee populations in the UK





CRYOARKS

“...enhancing the diversity, visibility, and availability of zoological samples for research & conservation.”





# Progress!

## Creation of a SPECIES INDEX

- Formal locations
- Easier to find specific drawers within the main collection

## New Databases

- Papis (Filemaker)
- Earthcape

## Barcodes

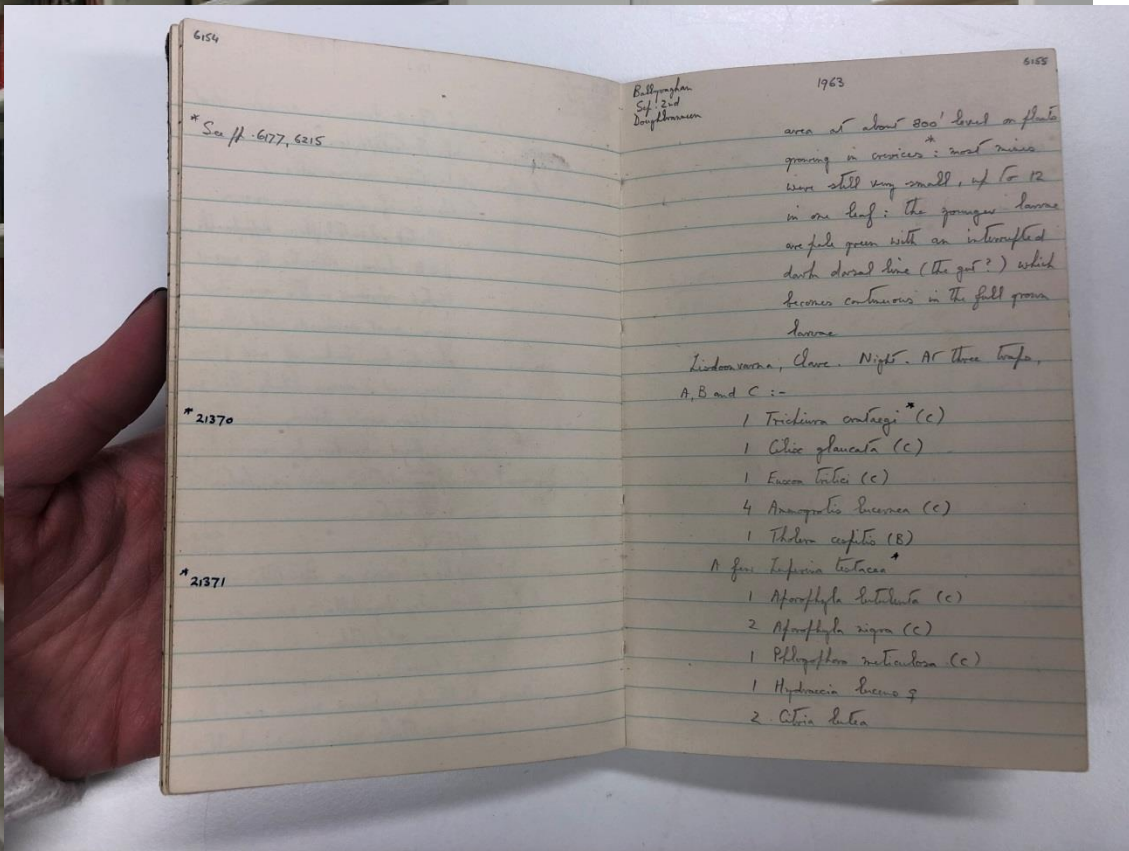
- Added to specimens being loaned, photographed or used by researchers/NRS





# Difficulties with data...

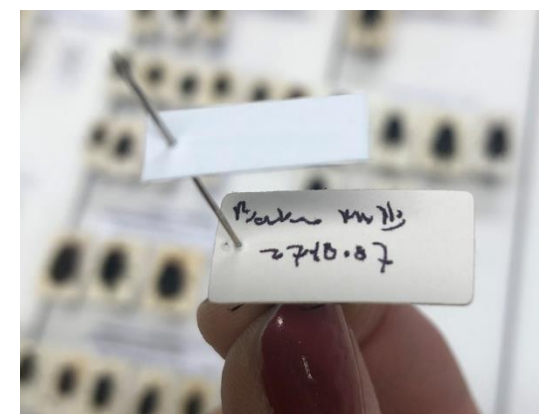
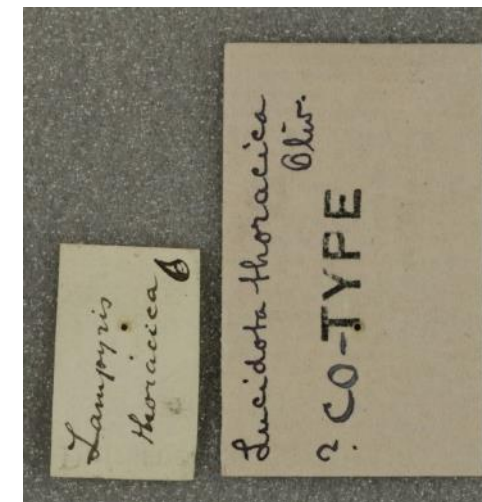
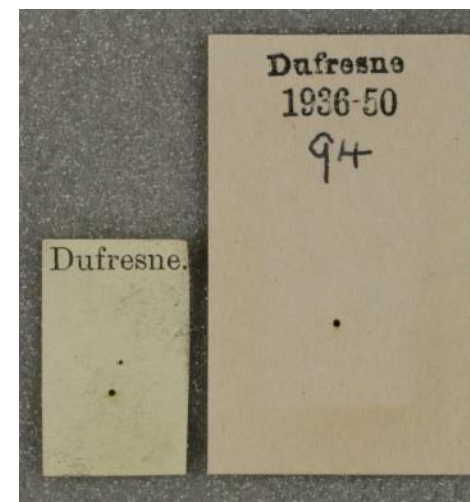
**Data- Dissociation :**  
Supplementary data is often  
contained in notebooks...





# Difficulties with data...

Reading the labels usually requires specimen handling...



Plus a second opinion!



# Difficulties with data...



Sometimes there  
is none!



# Carri-on Recording!







Thank you for  
listening!

Thanks to...



National  
Silphidae



UK Centre for  
Ecology & Hydrology

Recording  
Scheme



+ many many more  
organisations & individuals

**Ashleigh Whiffin**  
Assistant Curator of Entomology

[a.whiffin@nms.ac.uk](mailto:a.whiffin@nms.ac.uk)

 [@AshWhiffin](https://twitter.com/AshWhiffin)  
 [@ash\\_whiffin](https://www.instagram.com/ash_whiffin)